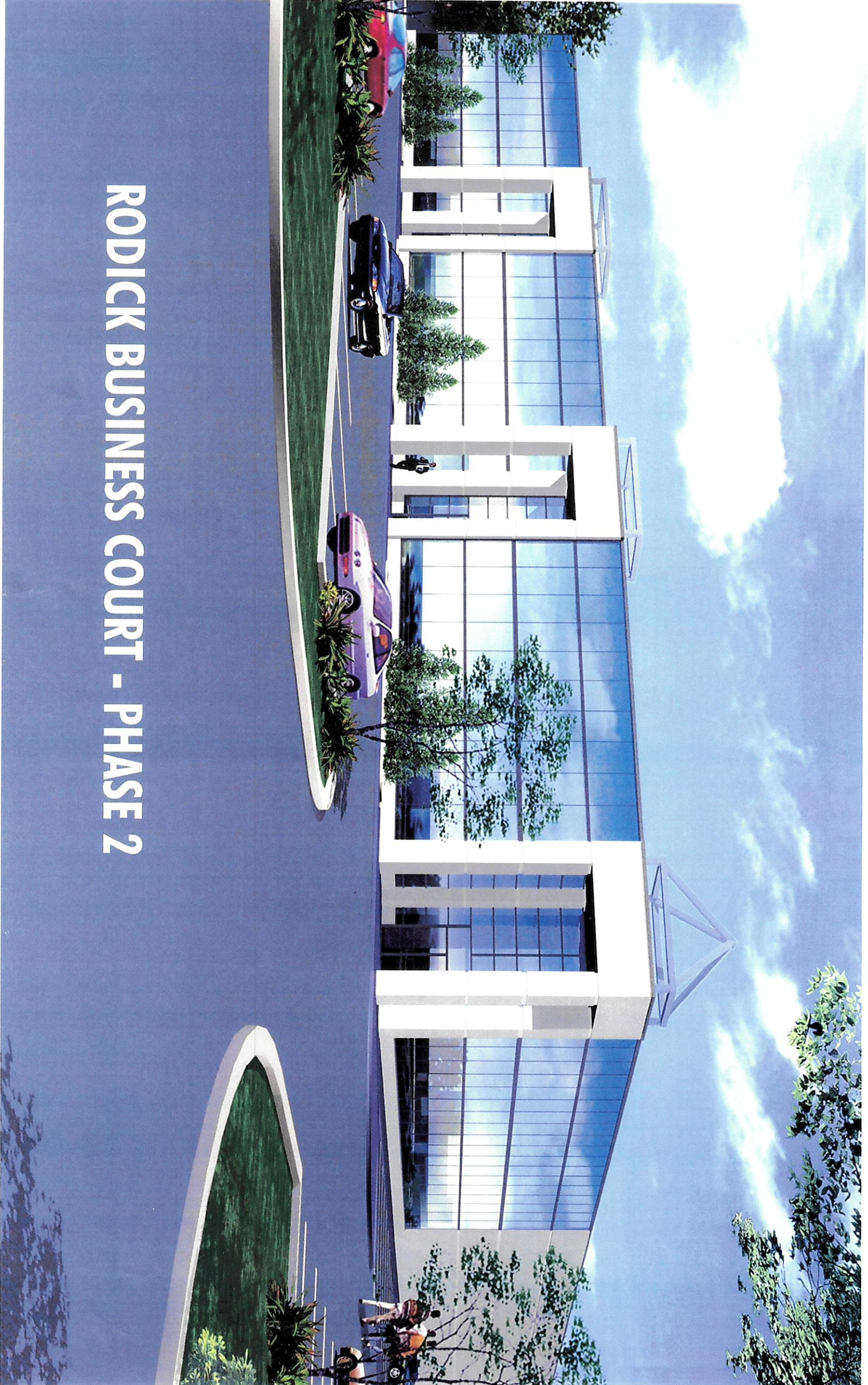
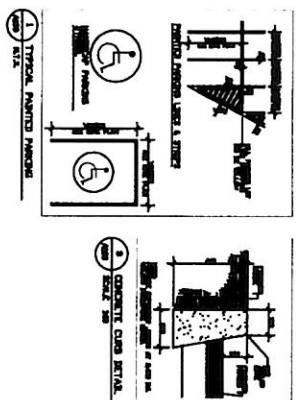


RODICK BUSINESS COURT - PHASE 2



BUILDING SPECIFICATIONS

BUILDING SIZE:	35,355 square feet (optional mezzanine with an additional 8,700 square feet).	ELECTRICAL SERVICE:	600 Volt, three (3) wire, four (4) phase - 600 Amp Service
LOCATION:	West side of Rodick Road at Whitehall Drive (just north of Highway No. 7) in Markham.	PLUMBING:	Rough-in for drain lines along front and rear of building.
PROPERTY SIZE:	2.87 Acres	EXTERIOR WALLS:	Reinforced concrete foundation walls. Insulated silver-grey reflective curtainwall glazing. Insulated architectural precast.
ZONING:	MC 60%	ROOFING:	Standard 4 ply 15 lb. felt and asphalt built-up roof membrane with an R value of 20.
PARKING:	105 Cars	FIRE PROTECTION:	Fully sprinklered. Sprinkler system monitored 24 hours by the Markham Fire Department.
OFFICE AREA:	Build to suite office component. Structural provisions made for optional mezzanine level.	COMMUNICATION:	High speed fibre optic communications link. Provision for high speed wireless connection.
WAREHOUSE AREA:	24 foot clear ceiling height. Three (3) truck level overhead doors and one drive-in overhead door. One skylight per 1,500 square feet (interchangeable with 3 to 5 ton heat / cool rooftop units. Warehouse floor - 6" thick - 25 Mpa with steel fibres. Energy efficient and quiet running Schwank radiant heaters.		

[illegible]

SURVEY INFORMATION

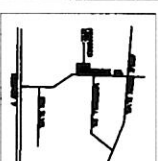
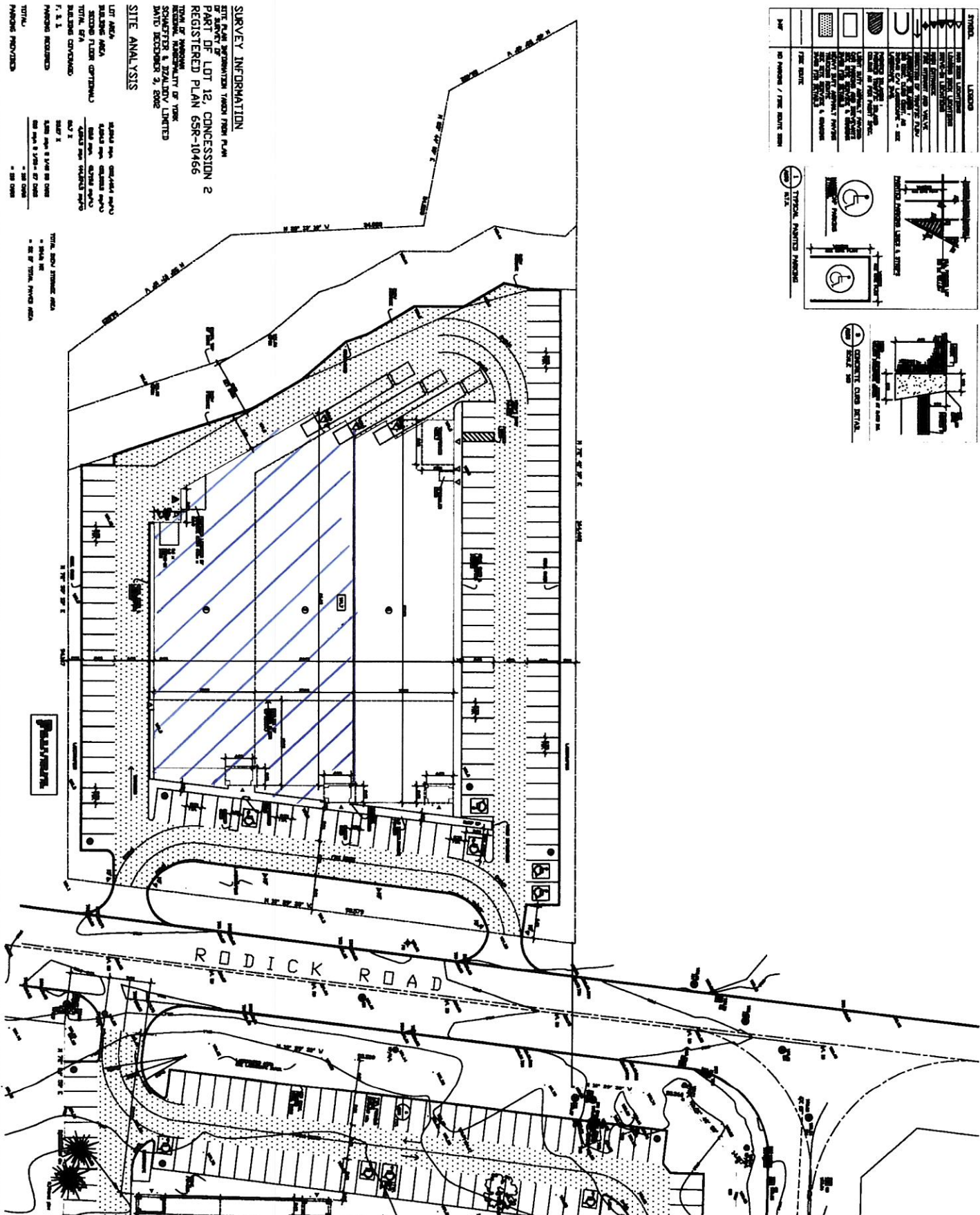
SITE PLAN INFORMATION TAKEN FROM PLAN
 PART OF LOT 12, CONCESSION 2
 REGISTERED PLAN 65R-10466
 TOTAL OF 1000000
 FEDERAL, MUNICIPALITY OF YORK
 SCHAEFER & ZDZILOWY LIMITED
 DATE: DECEMBER 2, 2002

SITE ANALYSIS

LOT AREA	28,940 SQA	028,940 SQA
BUILDING AREA	4,900 SQA	004,900 SQA
SECOND FLOOR (OPTIONAL)	840 SQA	000,840 SQA
TOTAL BFA	4,900 SQA	004,900 SQA
BUILDING COVERAGED		
BY 1		

• PER TOTAL PAVED AREA

PARSONS PROVIDING



३५

INT-

[illegible]

DRAWING ISSUE

DATE	PERSON/ORG	BY
	met to help prepare	
	met to do final report	
	met to policy and strategy	
	met to study plans	
	met to funding	
	met to marketing	
	met to share in of help	



VENCHIARUTTI GAGLIARDI
ARENITECTY IMI

REDICK BUSINESS COURT - PHASE 2
INDUSTRIAL, PRDCT for REUSSE PROPRIETIE

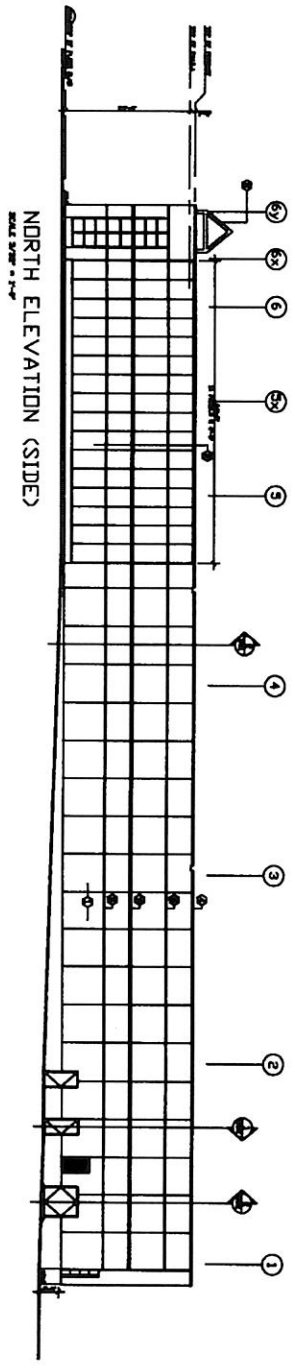
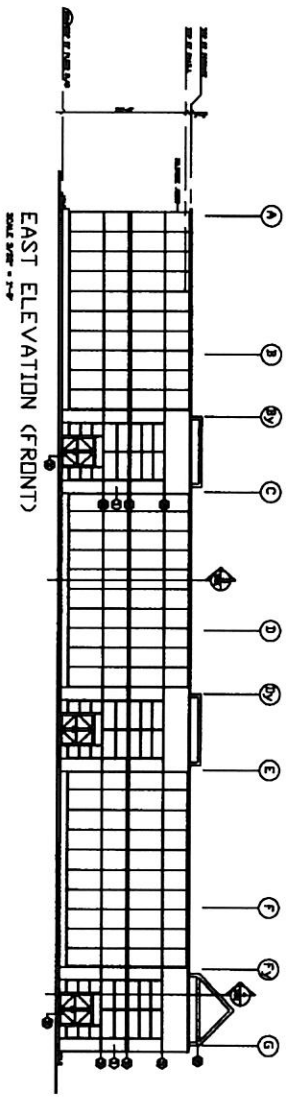
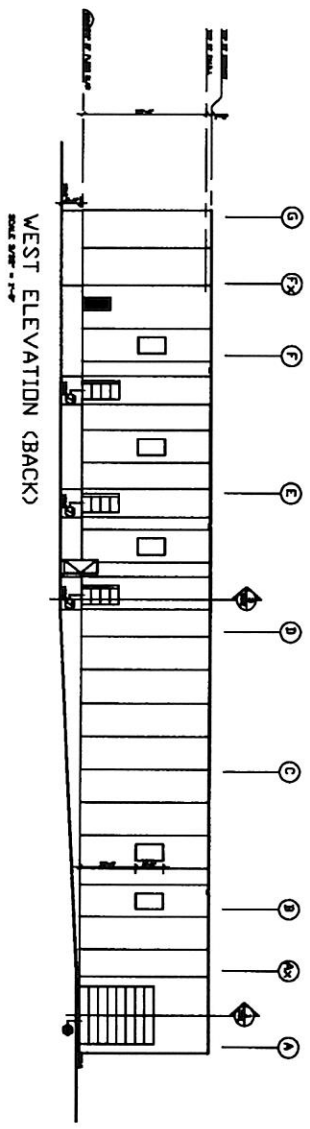
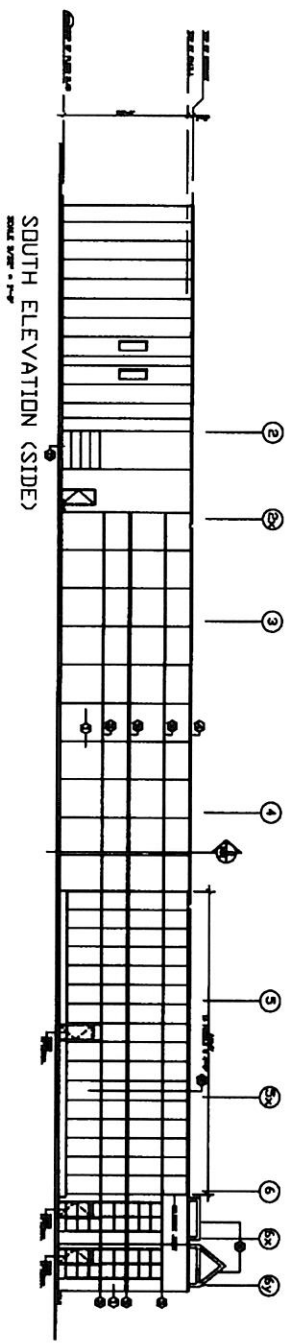
TEAM OF MASTERS

SITE PLAN

五、處理

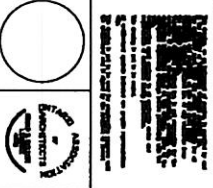
A-100

1	2	3	4	5	6	7	8	9	10	11	12	13	14	15	16	17	18	19	20	21	22	23	24	25	26	27	28	29	30	31	32	33	34	35	36	37	38	39	40	41	42	43	44	45	46	47	48	49	50	51	52	53	54	55	56	57	58	59	60	61	62	63	64	65	66	67	68	69	70	71	72	73	74	75	76	77	78	79	80	81	82	83	84	85	86	87	88	89	90	91	92	93	94	95	96	97	98	99	100	101	102	103	104	105	106	107	108	109	110	111	112	113	114	115	116	117	118	119	120	121	122	123	124	125	126	127	128	129	130	131	132	133	134	135	136	137	138	139	140	141	142	143	144	145	146	147	148	149	150	151	152	153	154	155	156	157	158	159	160	161	162	163	164	165	166	167	168	169	170	171	172	173	174	175	176	177	178	179	180	181	182	183	184	185	186	187	188	189	190	191	192	193	194	195	196	197	198	199	200	201	202	203	204	205	206	207	208	209	210	211	212	213	214	215	216	217	218	219	220	221	222	223	224	225	226	227	228	229	230	231	232	233	234	235	236	237	238	239	240	241	242	243	244	245	246	247	248	249	250	251	252	253	254	255	256	257	258	259	260	261	262	263	264	265	266	267	268	269	270	271	272	273	274	275	276	277	278	279	280	281	282	283	284	285	286	287	288	289	290	291	292	293	294	295	296	297	298	299	300	301	302	303	304	305	306	307	308	309	310	311	312	313	314	315	316	317	318	319	320	321	322	323	324	325	326	327	328	329	330	331	332	333	334	335	336	337	338	339	340	341	342	343	344	345	346	347	348	349	350	351	352	353	354	355	356	357	358	359	360	361	362	363	364	365	366	367	368	369	370	371	372	373	374	375	376	377	378	379	380	381	382	383	384	385	386	387	388	389	390	391	392	393	394	395	396	397	398	399	400	401	402	403	404	405	406	407	408	409	410	411	412	413	414	415	416	417	418	419	420	421	422	423	424	425	426	427	428	429	430	431	432	433	434	435	436	437	438	439	440	441	442	443	444	445	446	447	448	449	450	451	452	453	454	455	456	457	458	459	460	461	462	463	464	465	466
---	---	---	---	---	---	---	---	---	----	----	----	----	----	----	----	----	----	----	----	----	----	----	----	----	----	----	----	----	----	----	----	----	----	----	----	----	----	----	----	----	----	----	----	----	----	----	----	----	----	----	----	----	----	----	----	----	----	----	----	----	----	----	----	----	----	----	----	----	----	----	----	----	----	----	----	----	----	----	----	----	----	----	----	----	----	----	----	----	----	----	----	----	----	----	----	----	----	----	-----	-----	-----	-----	-----	-----	-----	-----	-----	-----	-----	-----	-----	-----	-----	-----	-----	-----	-----	-----	-----	-----	-----	-----	-----	-----	-----	-----	-----	-----	-----	-----	-----	-----	-----	-----	-----	-----	-----	-----	-----	-----	-----	-----	-----	-----	-----	-----	-----	-----	-----	-----	-----	-----	-----	-----	-----	-----	-----	-----	-----	-----	-----	-----	-----	-----	-----	-----	-----	-----	-----	-----	-----	-----	-----	-----	-----	-----	-----	-----	-----	-----	-----	-----	-----	-----	-----	-----	-----	-----	-----	-----	-----	-----	-----	-----	-----	-----	-----	-----	-----	-----	-----	-----	-----	-----	-----	-----	-----	-----	-----	-----	-----	-----	-----	-----	-----	-----	-----	-----	-----	-----	-----	-----	-----	-----	-----	-----	-----	-----	-----	-----	-----	-----	-----	-----	-----	-----	-----	-----	-----	-----	-----	-----	-----	-----	-----	-----	-----	-----	-----	-----	-----	-----	-----	-----	-----	-----	-----	-----	-----	-----	-----	-----	-----	-----	-----	-----	-----	-----	-----	-----	-----	-----	-----	-----	-----	-----	-----	-----	-----	-----	-----	-----	-----	-----	-----	-----	-----	-----	-----	-----	-----	-----	-----	-----	-----	-----	-----	-----	-----	-----	-----	-----	-----	-----	-----	-----	-----	-----	-----	-----	-----	-----	-----	-----	-----	-----	-----	-----	-----	-----	-----	-----	-----	-----	-----	-----	-----	-----	-----	-----	-----	-----	-----	-----	-----	-----	-----	-----	-----	-----	-----	-----	-----	-----	-----	-----	-----	-----	-----	-----	-----	-----	-----	-----	-----	-----	-----	-----	-----	-----	-----	-----	-----	-----	-----	-----	-----	-----	-----	-----	-----	-----	-----	-----	-----	-----	-----	-----	-----	-----	-----	-----	-----	-----	-----	-----	-----	-----	-----	-----	-----	-----	-----	-----	-----	-----	-----	-----	-----	-----	-----	-----	-----	-----	-----	-----	-----	-----	-----	-----	-----	-----	-----	-----	-----	-----	-----	-----	-----	-----	-----	-----	-----	-----	-----	-----	-----	-----	-----	-----	-----	-----	-----	-----	-----	-----	-----	-----	-----	-----	-----	-----	-----	-----	-----	-----	-----	-----	-----	-----	-----	-----	-----	-----	-----	-----	-----	-----	-----	-----	-----	-----	-----	-----	-----



- LEGEND**
- 1. 1/2" x 1/2" x 1/2" LIGHT ALUMINUM INSULATED
 - 2. 1/2" x 1/2" x 1/2" ALUMINUM CLADDING
 - 3. 1/2" x 1/2" x 1/2" ALUMINUM CLADDING
 - 4. 1/2" x 1/2" x 1/2" ALUMINUM CLADDING
 - 5. 1/2" x 1/2" x 1/2" ALUMINUM CLADDING
 - 6. 1/2" x 1/2" x 1/2" ALUMINUM CLADDING
 - 7. 1/2" x 1/2" x 1/2" ALUMINUM CLADDING
 - 8. 1/2" x 1/2" x 1/2" ALUMINUM CLADDING
 - 9. 1/2" x 1/2" x 1/2" ALUMINUM CLADDING
 - 10. 1/2" x 1/2" x 1/2" ALUMINUM CLADDING

DRAWING ISSUE	
NO.	DESCRIPTION
1	ISSUED FOR PERMIT
2	ISSUED FOR PERMIT
3	ISSUED FOR PERMIT
4	ISSUED FOR PERMIT
5	ISSUED FOR PERMIT
6	ISSUED FOR PERMIT
7	ISSUED FOR PERMIT
8	ISSUED FOR PERMIT
9	ISSUED FOR PERMIT
10	ISSUED FOR PERMIT



VINCIGLIOTTI GAGLIARDI
ARCHITECTS, INC.
1000 15th St., Suite 200
San Francisco, CA 94103
TEL: 415-774-1100
FAX: 415-774-1101
WWW.VGARCHITECTS.COM

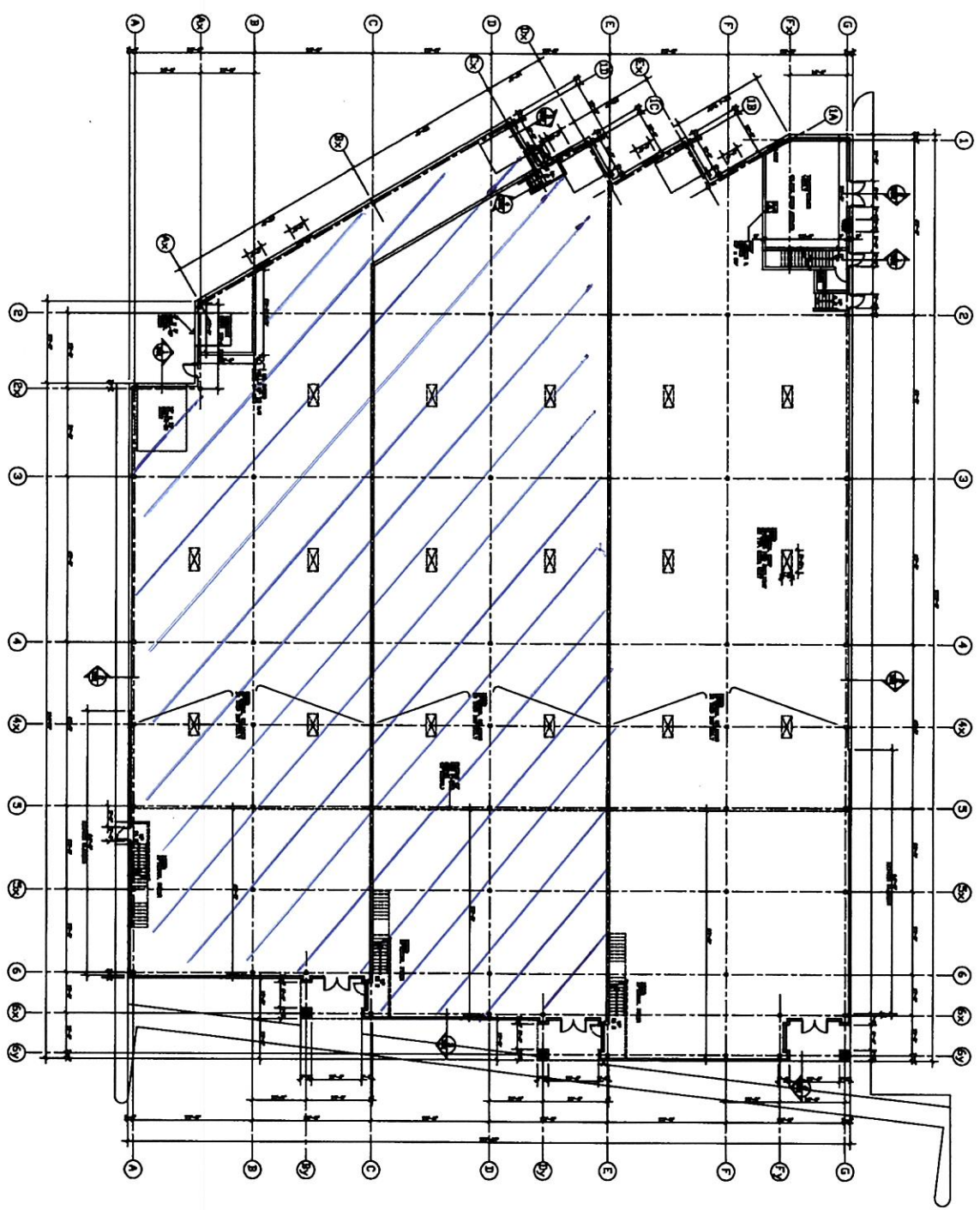
PROJECT
RODNEY BUSINESS
COURT - PHASE 2
REDEVELOPMENT PROJECT
REDEVELOPMENT PROJECT
REDEVELOPMENT PROJECT

DESIGNER
VINCIGLIOTTI GAGLIARDI
ARCHITECTS, INC.

DATE
10/1/2009

SCALE
1/8" = 1'-0"

PROJECT NO.
A-300



Unit 1

Unit 2

Unit 3

FLOOR PLAN
SCALE 1/8" = 1'-0"

DRAWING ISSUE	
NO.	DESCRIPTION
1	ISSUED FOR PERMIT
2	ISSUED FOR CONSTRUCTION
3	ISSUED FOR AS-BUILT
4	ISSUED FOR REVISION
5	ISSUED FOR CANCEL
6	ISSUED FOR REVISION
7	ISSUED FOR CANCEL
8	ISSUED FOR REVISION
9	ISSUED FOR CANCEL
10	ISSUED FOR REVISION
11	ISSUED FOR CANCEL
12	ISSUED FOR REVISION
13	ISSUED FOR CANCEL
14	ISSUED FOR REVISION
15	ISSUED FOR CANCEL
16	ISSUED FOR REVISION
17	ISSUED FOR CANCEL
18	ISSUED FOR REVISION
19	ISSUED FOR CANCEL
20	ISSUED FOR REVISION
21	ISSUED FOR CANCEL
22	ISSUED FOR REVISION
23	ISSUED FOR CANCEL
24	ISSUED FOR REVISION
25	ISSUED FOR CANCEL
26	ISSUED FOR REVISION
27	ISSUED FOR CANCEL
28	ISSUED FOR REVISION
29	ISSUED FOR CANCEL
30	ISSUED FOR REVISION
31	ISSUED FOR CANCEL
32	ISSUED FOR REVISION
33	ISSUED FOR CANCEL
34	ISSUED FOR REVISION
35	ISSUED FOR CANCEL
36	ISSUED FOR REVISION
37	ISSUED FOR CANCEL
38	ISSUED FOR REVISION
39	ISSUED FOR CANCEL
40	ISSUED FOR REVISION
41	ISSUED FOR CANCEL
42	ISSUED FOR REVISION
43	ISSUED FOR CANCEL
44	ISSUED FOR REVISION
45	ISSUED FOR CANCEL
46	ISSUED FOR REVISION
47	ISSUED FOR CANCEL
48	ISSUED FOR REVISION
49	ISSUED FOR CANCEL
50	ISSUED FOR REVISION
51	ISSUED FOR CANCEL
52	ISSUED FOR REVISION
53	ISSUED FOR CANCEL
54	ISSUED FOR REVISION
55	ISSUED FOR CANCEL
56	ISSUED FOR REVISION
57	ISSUED FOR CANCEL
58	ISSUED FOR REVISION
59	ISSUED FOR CANCEL
60	ISSUED FOR REVISION
61	ISSUED FOR CANCEL
62	ISSUED FOR REVISION
63	ISSUED FOR CANCEL
64	ISSUED FOR REVISION
65	ISSUED FOR CANCEL
66	ISSUED FOR REVISION
67	ISSUED FOR CANCEL
68	ISSUED FOR REVISION
69	ISSUED FOR CANCEL
70	ISSUED FOR REVISION
71	ISSUED FOR CANCEL
72	ISSUED FOR REVISION
73	ISSUED FOR CANCEL
74	ISSUED FOR REVISION
75	ISSUED FOR CANCEL
76	ISSUED FOR REVISION
77	ISSUED FOR CANCEL
78	ISSUED FOR REVISION
79	ISSUED FOR CANCEL
80	ISSUED FOR REVISION
81	ISSUED FOR CANCEL
82	ISSUED FOR REVISION
83	ISSUED FOR CANCEL
84	ISSUED FOR REVISION
85	ISSUED FOR CANCEL
86	ISSUED FOR REVISION
87	ISSUED FOR CANCEL
88	ISSUED FOR REVISION
89	ISSUED FOR CANCEL
90	ISSUED FOR REVISION
91	ISSUED FOR CANCEL
92	ISSUED FOR REVISION
93	ISSUED FOR CANCEL
94	ISSUED FOR REVISION
95	ISSUED FOR CANCEL
96	ISSUED FOR REVISION
97	ISSUED FOR CANCEL
98	ISSUED FOR REVISION
99	ISSUED FOR CANCEL
100	ISSUED FOR REVISION

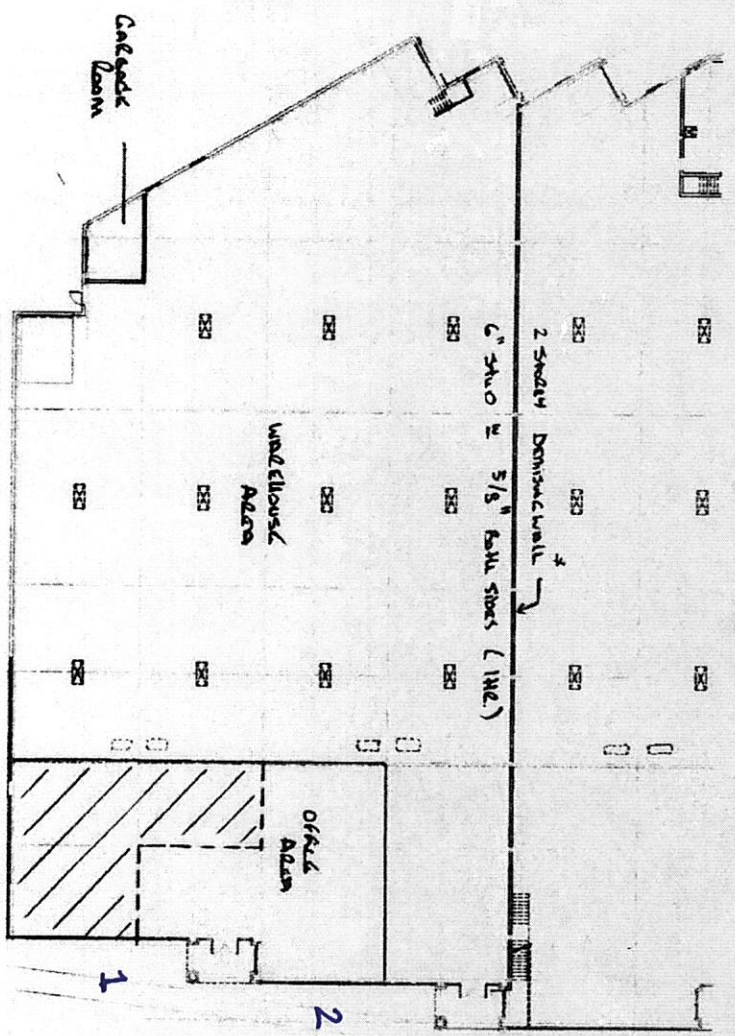


VENGARUTTI GAGLIARDI
ARCHITECTS

PROJECT
REDDICK BUSINESS
COURT - PHASE 2
INDUSTRIAL PROJECT FOR
REUSE PROPERTIES
1000 E. WASHINGTON
TOWN OF WASHINGTON

DRAWING TITLE
FLOOR PLAN

SCALE
1/8" = 1'-0"
SHEET NO.
A-200



3


2

1

SOURCE TESTIMONY:

AGD. 3,929 S.F.
 M&A 1,844 S.F.
 Unfurnished 18,196
 Glass Area 24,521 S.F.

1350 Robich Rd.
 Units 1-2



 MEETING LEVEL

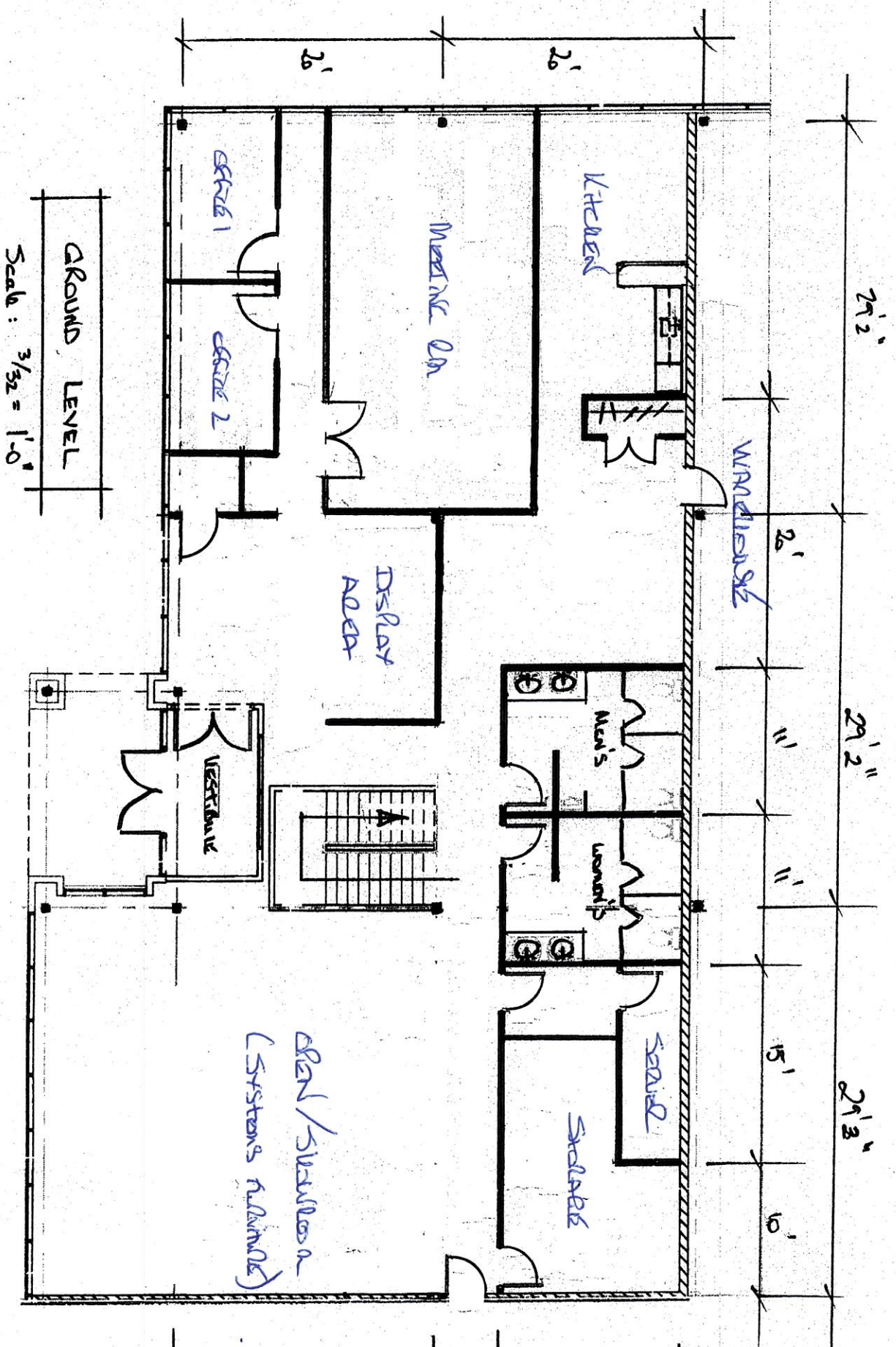
ARCHITECT

1350 Robich Rd. - Units 1-2

DATE: 07/19/88

BY: [Signature]

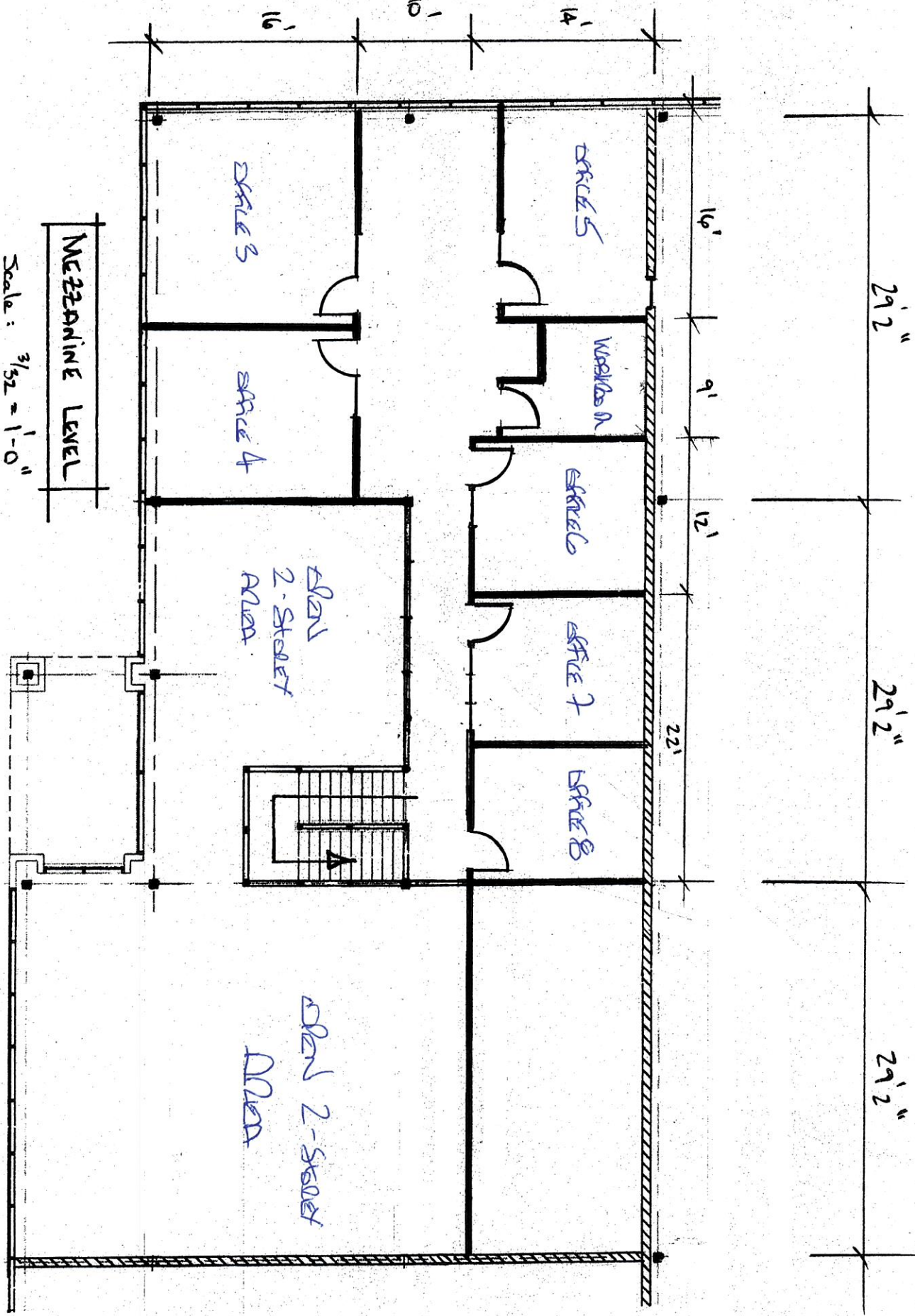





Wardrobe

1350 Rodick Ro.
Units 1-2

GROUND Office - 3925 sq. ft.



1350 Rodick Ro.
Units 1-2
MEZZANINE LEVEL - 1,844 sq.ft.